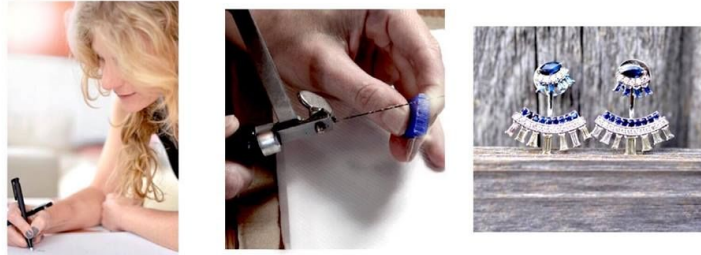


## *Brazilian Jewelry Designer Mary Esses 1-on-1*



Mary Esses Jewelry



In honor of celebrating Brazilian *carnival*, what could be better than introducing you to a Brazilian designer, Mary Esses, who happens to create some of the most breathtaking one-of-a-kind designs. A São Paulo transplant to New York City, Esses brings quite a unique twist to the metals she uses to create her jewelry, even some worn by First Lady Michelle Obama.

From special silvers and golds to leather and brass, intertwined with the most stunning white and grey diamonds.. perfectly seduce emeralds, rubies and garnets imported from her homeland into her designs. Esses has a talent for blending the modern look of luxury, with the elegance of classic vintage and hence the result is a uniquely uncomplicated contemporary jewel.

We sat down with Mary, to get to know the woman behind the jewels...

First and foremost, let's talk Brazil, instantly we see *Carnival*, dancing, colors and beautiful people.. How has the Brazilian culture influenced your designs?

“Well I think in the beginning of my work, things were a little more obvious because I was working primarily with the stones that I used to work in Brazil. Brazil is a huge source of natural stones and we have beautiful colors....

Then moving here (*New York*), I think I shifted a little bit, for different reasons, for the design influence that you get when you are in New York... So instead of using so much stone, I started using more metal and also it became a better canvas for me to express my trademark, which is the fabric texture.

The texture that I bring to the metal, mimics fabric. Now, if you look at my latest collection, you are going to see more and more colored stones again, the name is ‘UNA’ collection; I think it’s me going back to the Brazilian roots...”

One interesting aspect has to do with Mary’s creative ceramic work. We wondered if she, ever finds herself tapping into that knowledge from other forms of art?

“I think so. When I moved here fourteen years ago, I was just doing big pieces, with big colored stones, but it was difficult to move this type of jewelry here (*United States*) and I myself didn’t have a lot of occasions where I could wear those jewelry. I started sitting on the bench and doing it myself. I think once you have your hands in it, it started to have less and less space for those big stones, because I was putting a lot more information into the metal, it is my trademark.

If you look at my collection that Michelle Obama wore from, it was so important and expensive and very dramatic and like I said, I didn’t have a lot of places where to use them or sell them. The first collection that came after that, are the ‘Knot’, the ‘Bead’ and the ‘Wrap’.. so if you look at those collections you are still going to see the big stones, but you are going to see a lot more happening in the metal...which you can wear on the day-to-day, much easier to navigate from day to night, it’s easy, more neat.”

We just had to know what her favorite metal and stone to work with were?

“There isn’t. To be honest with you... Once you start selling to stores, the stores want you to continue with a DNA and they want to recognize you in the next collection and the next and the next... So you need to be different, but still the same...”

But, for the designer it's a little difficult, because you kind of have to put boundaries in your creativity... I want to design and make my drawings my way, I don't want to have so many rules."

I was looking at some of your most recent pieces and they look almost vintage inspired, from 'Passaros' collection...

"The truth is, this collection was inspired by the work of a scientist, Ernst Haeckel... if you pay attention, you are going to see some relationship between the 'Una' collection and those birds."

I asked Esses about that moment when she first saw the First Lady wearing her jewelry, because in America First Families are our Royalty, it's First Ladies throughout who have worn the finest of fashions, from Oscar De La Renta and Carolina Herrera and Mary Esses...

"She (*Mrs. Obama*) is an icon, of a new way of thinking, of a new way of making decisions in front of everyone, we are now in an era where everybody gets to see what we are doing, because of social media. We create a persona, we create an identity, so she is a public figure, who has great ideas... I like her, because of her way of being, and because of that, it was an honor that she was wearing my jewels."

Sometimes we get lost in wearing hoodies and skinny jeans... But we must remember how important it is to curate the timelessness regarded by jewelry and fashion, and when we embrace it, it makes us feel empowered!

Mary Esses resides in New York City and her collections can be found at select Jewelry stores across our great nation, to get to know Mary and her Jewels better, [Click HERE](#).